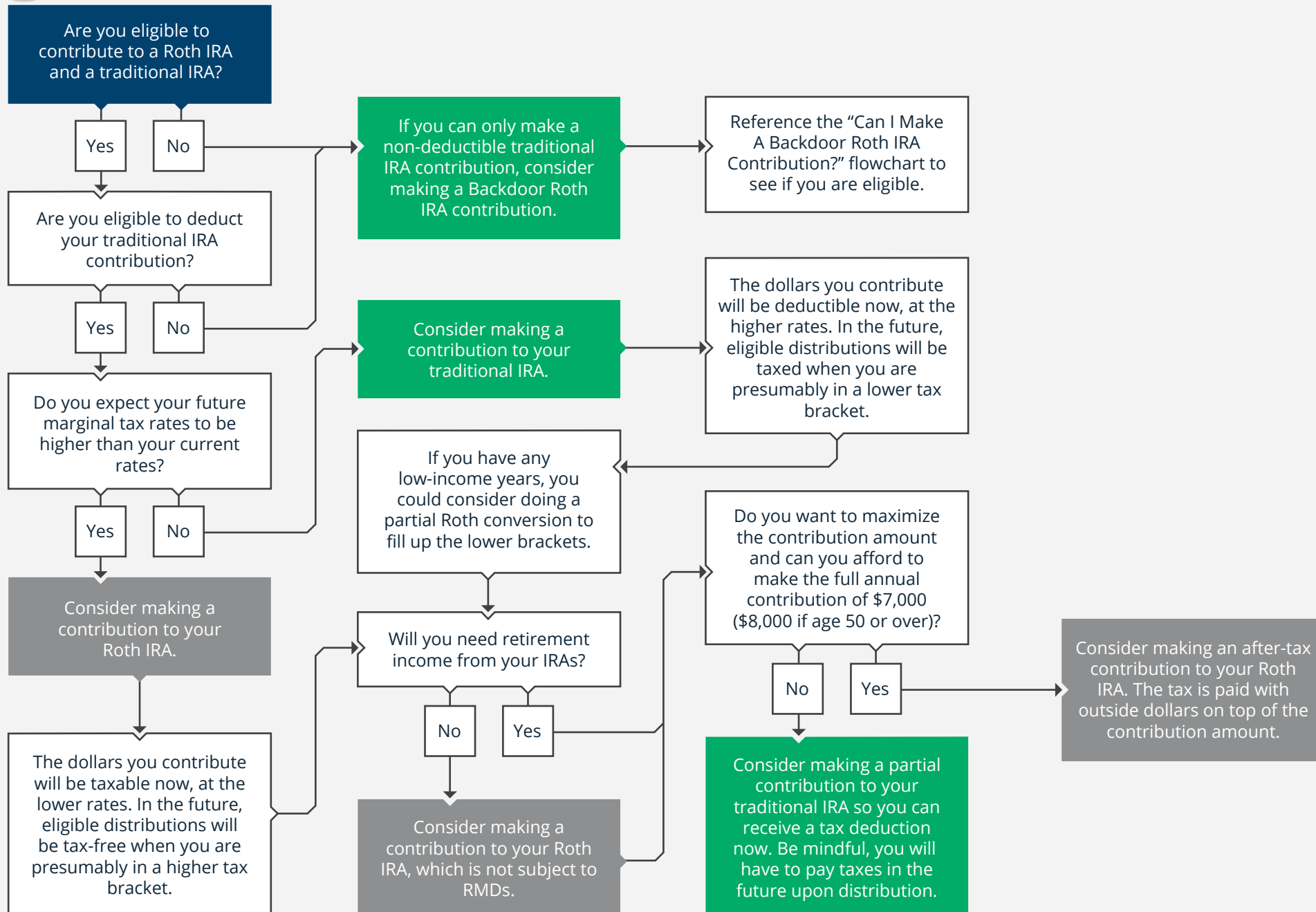




START HERE



Journey Strategic Wealth LLC ("Journey") is a Registered Investment Advisor. Kerry Meath-Sinkin is also a registered representative of Purshe Kaplan Sterling Investments, Inc. ("PKS"). In their separate capacity as a Registered Representative of PKS, Kerry Meath-Sinkin may recommend the implementation of securities through PKS instead of Journey. Securities offered through Purshe Kaplan Sterling Investments, member FINRA/SIPC. Headquartered at 80 State Street, Albany, NY 12207. Purshe Kaplan Sterling Investments and Journey Strategic Wealth d/b/a Meath Wealth Advisors are not affiliated companies. Information in this message is for the intended recipient[s] only. If you have received an email from Journey in error, we ask that you contact the sender and destroy the email and its contents. Please visit our Website for important disclosures.

Kerry Meath-Sinkin, CFP®, AIF®, Wealth Advisor, Partner & Wealth Advisor

1600 Utica Avenue South, Suite 900 St. Louis Park, MN 55416

kmsinkin@meathwealthadvisors.com | 612-412-9972 | www.meathwealthadvisors.com